



JDViewer Release Notes

Version 6.0

Document#:

Welcome to release 6.0 of JDViewer. This document provides version numbers, a description of new features, and a list of unresolved issues associated with this release.

Software Version Number

JDViewer	6.0
----------	-----

Introduction

JDViewer is a dedicated Application Software for CellAdvisor applicable for managing and analyzing the measurement data or editing the built-in table and scenario.

Supported Model

JDViewer supports below models. Some of the functions are limited per each model. Please refer to Basic Operation section for more details.

- JD723A, JD725A, JD724B, JD723C, JD724C, JD725C, JD726C
- JD7105B, JD7108B
- JD745A, JD746A, JD748A, JD745B, JD746B, JD748B
- JD785A, JD786A, JD787A, JD785B, JD786B, JD787B
- DS9000 series

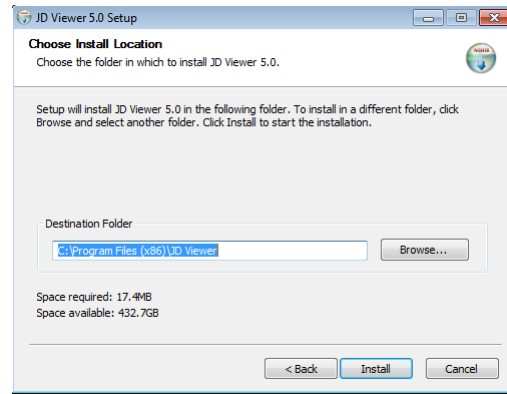
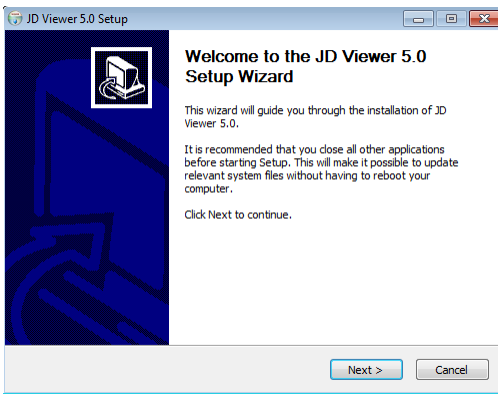
Compatible Operating System

- Microsoft Windows XP x86 SP2 or compatible
- Windows Vista SP1 or compatible
- Windows 7 x86 / x64
- Windows 8/8.1 x86 / x64
- Windows 10 x86 / x64

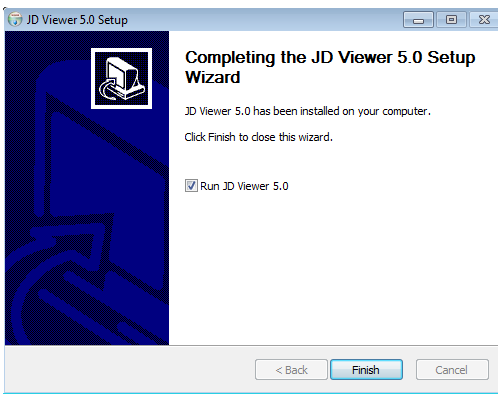
Installation Instructions

Application Software Installation

- Download the newest application software from the Viavi Solutions website, <http://www.viavisolutions.com/en/services-and-support/support/software-downloads-and-updates#Group-C>, and execute.



- Change installation location if required.

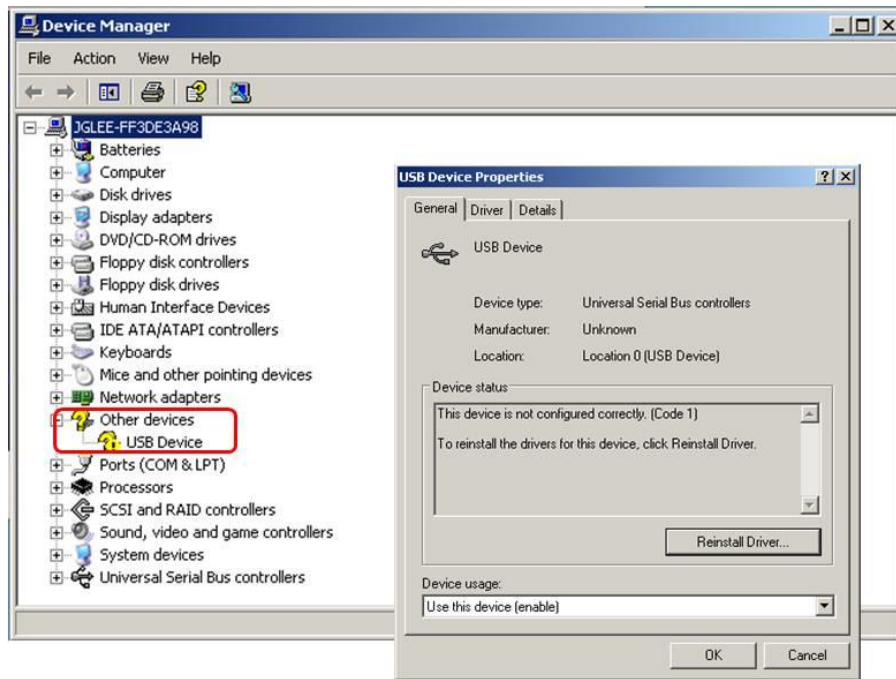


- You will be asked to update/install Microsoft .Net Framework or Microsoft Visual C++ 2008 Redistributable if your current version is out dated or missing.

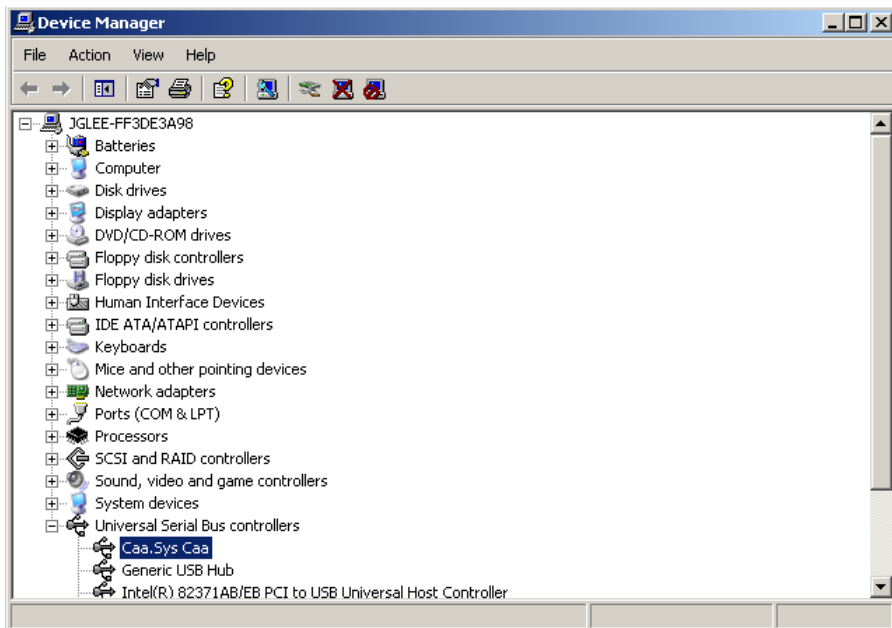
USB Driver Installation

To use USB connection for interfacing with CellAdvisor, proper USB driver matched with your OS should be installed.

- Select the JDViewer Setup file, and install the JDViewer program.
- After turn on the unit, connect the unit and computer using the USB client cable. Then, the computer starts to find the new hardware. If the computer cannot set up for the new hardware, you can check the connection in the **Control Panel-Device Manager** as a **USB Device**.
- Double click the **USB Device** and click the **Driver Update (Or install Driver)**.
- The Hardware Wizard process will be started. Then, you can find the driver files in the **Driver** folder in the **Program files – JDViewer directory**.
- When you set up the driver files, Windows XP's driver files were in the **XP folder**. And the Windows Vista and Windows 7's driver files were in the **Vista folder**. Please select the exact directory, when you select the directory to set up the driver.



- When the driver file set up, the “Other devices” would be change as “Caa.Sys.Caa” (in Windows XP.) or “GenCOMM(WDF)”(in Windows Vista or Windows 7)



Revision History

Version: 5.0

Date: July 10, 2013

New Features

- Supportability of JD780A product family: JD785A, JD786A, and JD788A
- Language options in Help: English and Korean
- Firmware upgrade for JD780A series
 - JDViewer now can load firmware file stored in the PC, and upgrade the JD780A via Ethernet or USB connection.
 - Once the JD780A received firmware from JDViewer, then it performs firmware upgrade and auto power recycling to complete the upgrade.

Improvement/Bug Fix

- Added header information on a printed form of Auto Measure Result
 - To change the header, select **Utility: User Info: {Company} / {User} / {Logo}**
- Improved to export parameters (Cell ID, Sector ID, and Group ID) from the LTE OTA Control logging data.

Known Issue/Bug

- While uploading firmware file to JD780A, progress bar stop updating if any mouse or key action is happened.
- Displaying incorrect unit in csv file exported from WCDMA OTA logging file was found. Unit of following parameters should be “dB” not “dBm”
 - CPICH, P-CCPCH, PHICH, P-SCH, and S-SCH

Version: 5.1

Date: Sep. 13, 2013

New Features

- Comparison of two Auto Measure results
- Double mouse click to open a data file
- Display of upgrade progress with byte information

Improvement/Bug Fix

- Improved to have equal spacing between each grid in any case
- Exception handling for the data exceeding valid range

Known Issue/Bug

- Fixed bug in DTF conversion that limited the data point as 512
- Fixed the error in displaying Auto Measure results
- Fixed bug that displays wrong Marker value in DTF(VSWR) chart
- Fixed inconsistent unit display in DTF where the x-axis has been saved as feet
- Fixed error in calculating trace average after DTF conversion
- Add unit in csv file export
- LTE OTA Logging Export
- Fixed error on updating limit line value in conversion between VSWR and Return loss
- VSWR -> DTF conversion Error
- Fixed error in Auto Scale in DTF VSWR

Version: 5.2

Date: Jan. 28, 2014

New Features

- Compatibility with Windows 8, 32/64 bits

Improvement/Bug Fix

- Improved to have additional information included in a trace file created on JD720C:
 - GPS Info
 - Fields being required for StrataSync
 - Updated default terminologies used for subtitle

Known Issue/Bug

- Fixed Max D of DTF in JDViewer to be compatible with JD720X
- Fixed to update the Limit value displayed at the bottom of chart upon changing at control box
- Fixed error in displaying unit of cable loss in DTF mode
- Fixed intermittent/irregular turned up of Band Marker while using

Compatible Firmware version

- JD7105B 4.085.021 or higher
- JD720B 1.041.003 or higher
- JD720C 3.045.001 or higher

- JD740A 1.105.001 or higher
- JD780A 2.111.052 or higher

Version: 5.3

Date: Apr. 25, 2014

New Features

- Setting of M5 at Peak/Valley between M2 and M3, and M6 at Peak/Valley between M3

Improvement

- Improved Print Page function so the users can change the order of printing.
- Add Limit Line value next to the line
- Enable to open the DTF conversion window as new
- Cable List update: AP6012J50
- Maintaining Last Save path and Last Load path separately

Bug Fixes

- Fixed the bug that made a Marker label grayed-out whenever a chart was pasted on Word file
- Fixed the Printer error that happened when a Marker was activated
- Fixed the error on Reference Marker position after saving or loading
- Fixed the error that enlarged the Marker font on the Smith Chart screen
- Fixed the error on loading a 780A logging file

Compatible Firmware version

- JD7105B 4.085.021 or higher
- JD720B 3.045.001 or higher
- JD720C 1.042.024 or higher
- JD740A 1.111.002 or higher
- JD780A 2.120.002 or higher

Version: 5.4

Date: Dec. 9, 2014

New Features

- Supportability of new products: JD725C, JD726C, JD745B, JD746B, JD748B, JD785B, JD786B, and JD788B
- Drag and drop to open a file – Dragging a file and dropping it onto JDViewer opens it.

- Drag and drop to rearrange the order of files to be printed

Improvement/Bug Fix

- Fixed the bug that the Delta marker info got wrong after a trace was saved with the marker
- Fixed the error that new X-scale setting for DTF was not saved

Known Issue/Bug

- None

Compatible Firmware version

- JD7105B 4.085.021 or higher
- JD720B 3.045.001 or higher
- JD720C 1.042.024 or higher
- JD740A 1.111.002 or higher
- JD780A 2.120.061 or higher

Version: 5.5

Date: Jan. 30, 2015

New Features

- Supportability of DS9000 series

Improvement/Bug Fix

- None

Known Issue/Bug

- None

Compatible Firmware version

- JD7105B 4.085.021 or higher
- JD720B 3.045.001 or higher
- JD720C 1.042.024 or higher
- JD740A 1.111.002 or higher
- JD780A 2.120.061 or higher
- DS9000 1.051 or higher

Version: 5.6

Date: April 20, 2015

New Features

- Supportability of RFoCPRI Logging file

Improvement/Bug Fix

- None

Known Issue/Bug

- None

Compatible Firmware version

- JD7105B 4.085.021 or higher
- JD720B 3.045.001 or higher
- JD720C 1.042.024 or higher
- JD740A 1.111.002 or higher
- JD780A 2.120.061 or higher
- DS9000 1.051 or higher

Version: 5.7

Date: July 15, 2015

New Features

- Supportability of Internet Protocol version 6 (IPv6)

Improvement/Bug Fix

- Improved the Save feature to allow users to enter a file name up to 96 bytes
- Fixed the error in loading a `.grr` file that was saved in RFoOBSAI testing
- Improved saved file is loaded one application when user double-clicked files on Windows Explorer.
- Improved the order of print sequentially that user opened saved files.

Known Issue/Bug

- None

Compatible Firmware version

- JD7105B 4.085.021 or higher
- JD720B 3.045.001 or higher
- JD720C 1.042.024 or higher
- JD740A 1.111.002 or higher
- JD780A 2.120.061 or higher
- DS9000 1.051 or higher

Version: 5.8

Date: October 20, 2015

New Features

- None

Improvement/Bug Fix

- Fixed the error that caused the inconsistent display of Codogram in historical and snapshot views.

Known Issue/Bug

- None

Compatible Firmware version

- JD7105B 4.085.021 or higher
- JD720B 3.045.001 or higher
- JD720C 1.042.024 or higher
- JD740A 1.111.002 or higher
- JD780A 2.120.061 or higher
- DS9000 1.051 or higher

Version: 5.9

Date: November 23, 2017

New Features

- USB driver auto installation
- Batch conversion of *.tra into *.csv or *.bmp

Improvement/Bug Fix

- Added 2 Port Transmission to the mode drop-down list in MSL editor
- Fixed the error in loading a .grr file that was saved while testing BBU Emulation.
- Fixed the error for GPS coordinates display.
- Fixed the error in printing loaded trace files on Windows 10.
- Fixed the error in CAA trace files when operating an image copy event.
- Fixed the error in exporting a route map file to a CSV file.

Known Issue/Bug

- None

Compatible Firmware version

- JD7105B 4.085.021 or higher
- JD720B 3.045.001 or higher
- JD720C 1.042.024 or higher
- JD740A 1.111.002 or higher
- JD780A 2.120.061 or higher
- DS9000 1.051 or higher

Version: 6.0

Date: July 19, 2018

New Features

- Supportability of exporting KML file using CA5000 route map file.

Improvement/Bug Fix

- None

Known Issue/Bug

- None

Compatible Firmware version

- JD7105B 4.085.021 or higher
- JD720B 3.045.001 or higher
- JD720C 1.042.024 or higher
- JD740A 1.111.002 or higher
- JD780A 2.120.061 or higher
- DS9000 1.051 or higher

- CA5000 5.001.022r or higher