

JD740A Emergency Recovery

This document provides systematic procedure how to recover the JD740 Series Analyzers (JD745A, JD746A, and JD748A) from nonoperational status through “Emergency Recovery Mode”. This procedure also could be useful if you have any problem encountered during the firmware upgrade.

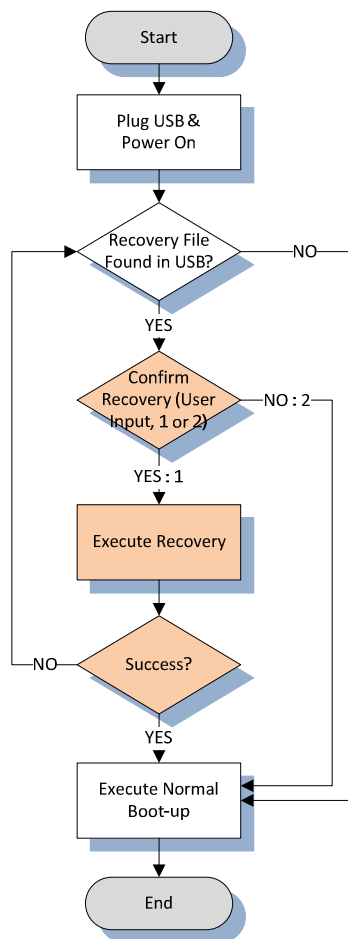
In order to avoid a corruption in the emergency recovery mode,

- Connect the instrument to the AC power
- The USB memory device shall not be removed from the instrument.

IMPORTANT NOTE:

The emergency recovery completion requires an USB memory device with the latest recovery file. It is required that such USB memory device has at least 150 MB of available space. Otherwise, the download process will not proceed.

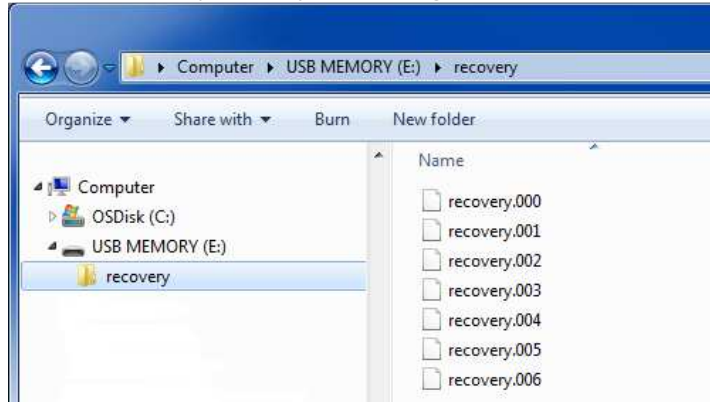
Following diagram describes the entire recovery process.



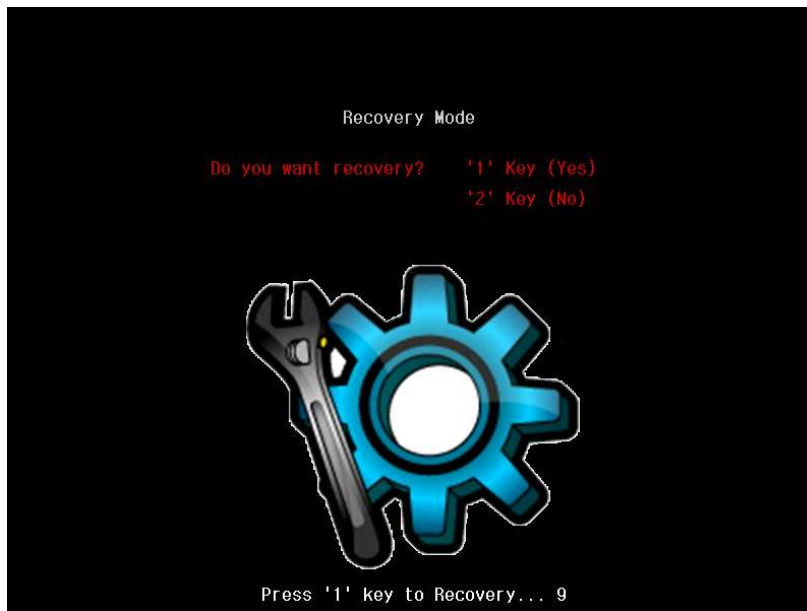
Let us start with the preparation.

1. Preparation

- A. On a computer with Internet access, visit [JDSU's Software Updates](#) website and download a recovery file (recovery.zip) available there for JD740A series analyzers.
- B. Prepare a USB memory stick (at least 150 MB free space required).
- C. Create a folder under root directory of USB memory named "recovery", all small letters, case sensitive.
- D. Unzip "recovery.zip" files in the "recovery" folder as follow. The total number of files included in the zip file subject to change without notice.



2. Plug USB memory into the instrument contains all recovery files.
3. Turn the instrument on.
4. Select "1" for start recovery, and "2" for normal boot-up by skipping recovery mode. (If you want to recover, press 1 within 10 sec time out period, otherwise it will go to normal boot-up process automatically).



5. The JD740 will automatically start recovery. (The recovery process may take several minutes. Do not remove the USB memory from the instrument during the recovery process. Otherwise, it might corrupt the recovery file and process).
6. After the successful completion of the recovery, the JD740 will automatically restart.
7. After the JD740 initialization, please verify the firmware version selecting the SYSTEM hard-key in the numerical keys (Number 3), and upgrade firmware if required).